

inViZia[®]

Anterior Cervical
Plate System

Diminishes Profile Without
Sacrificing Reliability



**MICHELSON
TECHNOLOGY
AT WORK**



HIGHRIDGE

Elegance in Profile and Visibility

The inViZia System builds on Highridge Medical's extensive experience with cervical implants.

The inViZia System is a sleek solution that offers direct visualization of implant placement and screw locking.



Sleek Without Sacrifice

Visualization



- Large graft windows provide clear endplate visualisation
- Narrow waist affords generous lateral visibility

Comfort



- Low-profile plate (less than 2 mm) may reduce postoperative dysphagia in patients¹
- Minimal and sleek instrumentation allows for an intuitive and simple surgical procedure

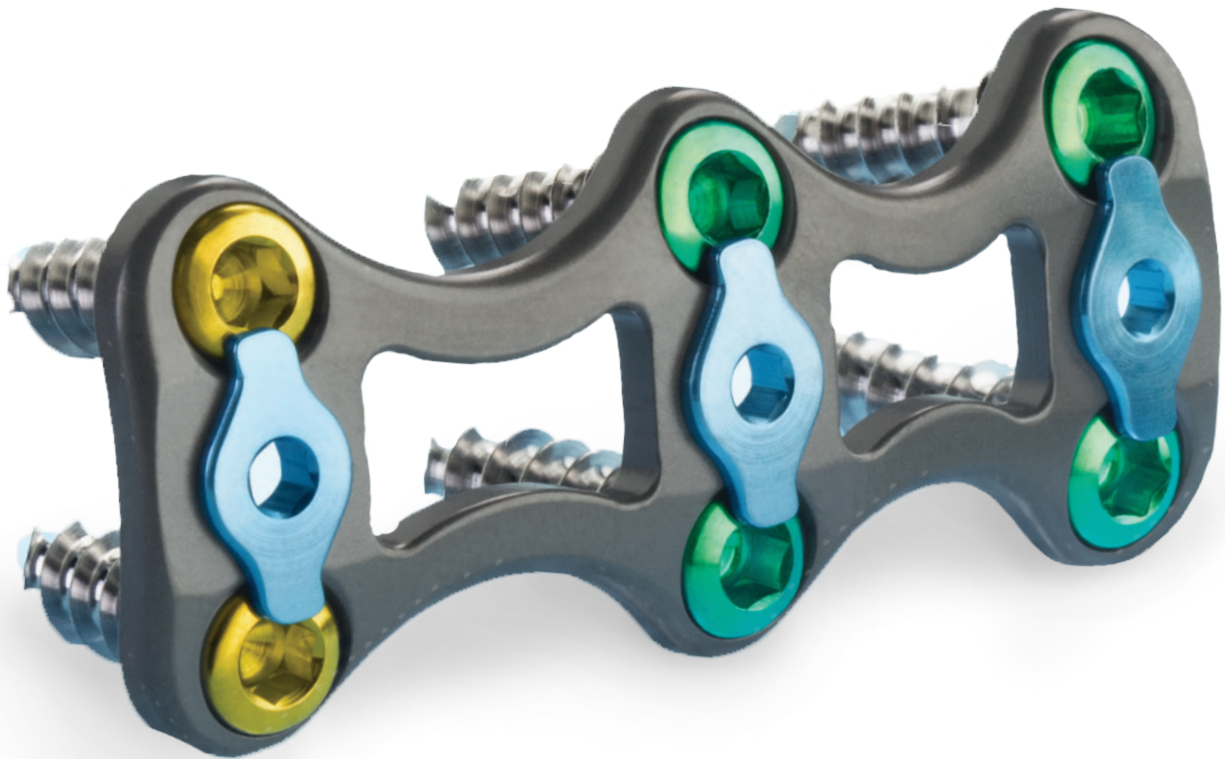
Innovation



- The Secure-Twist[®] Anti-Migration System secures up to two screws with a twist of the driver
- Aggressive DiamondTip[™] Self-Drilling Screws reduce surgical steps and provide tactile feedback to confirm that the screw is fully seated

High Visibility. Low Profile.

The inViZia System is an innovative cervical plate solution. It offers direct visualisation of implant placement and screw locking. With its generous graft window, low profile, simple locking mechanism, narrow waist and true self-drilling screws, the inViZia System provides a complete solution in one user-friendly implant.



Experience the Benefits of the inViZia System

Clear Graft Visualization

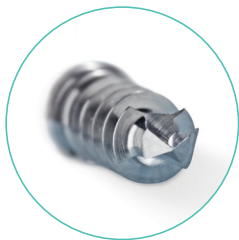
The inViZia System combines a generous graft window with a narrow (less than 10 mm) implant waist to provide clear endplate visualisation and a direct view of the graft's lateral edges in order to facilitate midline placement.

Profile Less Than 2 mm

Clinical literature suggests that low plate profile is one of the factors that may decrease postoperative dysphagia.^{1,2}

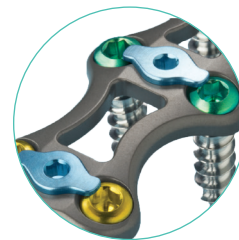
User-friendly System

The entire procedure can be completed using minimal instrumentation.



True Self-Drilling Screws

The DiamondTip Screw is designed to increase efficiency and add convenience to anterior cervical discectomy and fusion (ACDF) procedures.⁴



Narrow Implant Waist

The slim implant waist (less than 10 mm) facilitates midline placement and improves visibility of the graft's lateral edges.



Secure-Twist Locking Mechanism

The mechanism provides clear visual and tactile feedback of locking cap engagement. A simple twist of the locking cap ensures locking mechanism engagement.

DiamondTip™ Self-Drilling Screw Performance

Highridge Medical's proprietary DiamondTip Screw is designed to increase efficiency and add convenience to your ACDF procedures:

- Screw design has been shown to require less driving torque than alternative designs⁴
- Screw design has demonstrated higher pull-out load than alternative designs⁴
- Screw can be placed without the need for a pilot hole



References:

1. Lee MJ, Bazaz R, Furey CG, Yoo J. Influence of anterior cervical plate design on dysphagia: a 2-year prospective longitudinal follow-up study. *J Spinal Disord Tech.* 2005;18(5):406–9.
2. Scholz M, Schnake KJ, Pingel A, Hoffmann R, Kandziora F. A New Zero-Profile Implant for Stand-Alone Anterior Cervical Interbody Fusion. *Clinical Orthopaedics and Related Research.* 2011 Mar; 469(3):666-73.
3. Lee MJ, Bazaz R, Furey CG, Yoo J. Influence of Anterior Cervical Plate Design on Dysphagia: A 2-Year Prospective Longitudinal Follow-Up Study. *J Spinal Disord Tech.* 2005 Oct; 18(5): 406-9.
4. Konz R, Jensen J, Kincaid B. Comparison of self-drilling and self-tapping cervical spine screws using ASTM F543-07. *Journal of ASTM International.* 2011;8(7):1-13.

For more information, visit highridgemedical.com

Highridge Medical
10225 Westmoor Drive
Westminster, CO 80021

